

**Grow It, Bake It, Eat It, June 12—16 (5 days) 8:00-noon (Ages 5-10)** Plant a garden. Bake bread, cookies, and more. And, of course, eat what you bake and make. Spend a day in the woods cooking snacks over the campfire. Come join us to learn about gardening, baking and more. (Fee: \$60\*-\$70)

**Science Camp I June 19—23 (5 days) 8:00-noon (Ages 5-10)**  
 Let's look at science. How do scientists do experiments? What can you invent that is new and different? There will be some tried and true experiments (elephant toothpaste) and all new areas of science. What can we use to build? Are there new places to explore? Join us for a week of many hands on activities. (Fee: \$60\*-\$70)

**Pickles, Pie, Peace and me June 26--30 (5 days) 8:00-noon (Ages 7-12)**  
 Pickles"....kids have tough days too! "Pie"...yeah for friendship and teambuilding! No bullies allowed! It's a new world we're wanting, in which people know and practice the skills of getting along. We are helping this new world come forth. But life's challenges also create strength, confidence, happiness (pie) and success. Enjoy making pie and sharing it at the end of this week. (Fee: \$60\*-\$70)

**I Will Survive July 10--13 (4 days) 8:00-3:00 (Ages 8-12)**  
 Spend Wednesday night sleeping in the woods. Can you survive a night in our woods? Learn to build a fire and cook over the campfire, learn survival skills. Build a shelter to sleep in. Test your skills with survival games. Go hiking and spend time outside learning about the great outdoors. (Fee: \$70\*-\$80)

**Amazing Animals July 24—28 (5 days) ✂️ 8:00-noon (Ages 5-10)**  
 Are all animals cute and cuddly? We will learn about the crawling, creeping, slimy, and just plain scary creatures, plus the cute ones. Study mammals, fish, birds, amphibians, and reptiles. Help care for, observe, and pet our center's animals. (Fee: \$60\*-\$70)

**Camp Dig July 31—Aug 4 (5 days) 8:00-noon (Ages 5-10)**  
 Come join us in digging into our past. Spend a day each with dinosaurs, Native Americans, and pioneers. Play games and make toys from the past. What do fossils tell us about the past? Then spend a day looking at your past. (Fee: \$60\*-\$70)

**Extreme Game Camp August 7—10 (4 days) 8:00-3:00 (Ages 5-10)**  
 This week is packed with games, games, games! Play games you never heard of, play old games in new ways. Create games to take home and play. One day is spent with water games. How many games can we play in a week? (Fee: \$60\*-\$70)

**Attention Parents!!!**

- ☺ Drop off is at 7:45
- ☺ Daily snacks are provided
- ☺ Join us for a slide show the last 15 minutes on the last day of camp

**Registration Form**



Child's Name \_\_\_\_\_  
 Age \_\_\_\_\_ Grade (2016-2017) \_\_\_\_\_  
 Parent Name \_\_\_\_\_  
 Street Address \_\_\_\_\_  
 City \_\_\_\_\_ State \_\_\_\_\_ Zip \_\_\_\_\_  
 Contact phone number \_\_\_\_\_  
 E-mail \_\_\_\_\_

**Register early!!!**

**\*Camp fees increase after May 1, 2017**  
 There is a \$10 non-refundable deposit for each camp. Deposit is included in the camp fee. Please enclose deposit with registration form. A registration form is required for each child attending camp. Check which camp(s) your child will be attending and enter amount of deposit.

- Grow It, Eat It, Bake It, Share It \$ \_\_\_\_\_
  - Science Camp I \$ \_\_\_\_\_
  - Pickles, Pie, Peace and Me \$ \_\_\_\_\_
  - I Will Survive \$ \_\_\_\_\_
  - Amazing Animals \$ \_\_\_\_\_
  - Camp Dig \$ \_\_\_\_\_
  - Extreme Game Camp \$ \_\_\_\_\_
- Total \$ \_\_\_\_\_**

Checks payable to **Franciscan Earth Literacy Center**

Please detach form and return with payment to:  
**FELC Summer Camp Registration**  
 194 St. Francis Ave.  
 Tiffin, OH 44883  
[sshafranek@felctiffin.org](mailto:sshafranek@felctiffin.org)  
 419-448-7485



**FIND US ON FACEBOOK**



### Scholarships Available

Through the generosity of the B.A. Seitz Fund and the Cliff Farmer Scholarship Fund, a limited number of scholarships are available for children who wish to attend a camp, but whose families are financially challenged. For more information contact the Earth Literacy Center prior to registering for a summer camp.



### **Background and Program**

The Franciscan Earth Literacy Center (FELC) is an environmental education center and

demonstration facility designed to promote the appreciation of nature and encourage sustainable living practices.

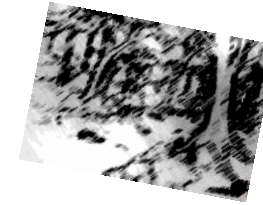
Our summer day camp programs are designed to be active, fun, and educational. Day campers will be challenged, excited, and enlightened by our hands-on activities, experiments, demonstrations, crafts, and games that occur every day. Campers will gain an understanding of our interconnectedness with the environment and each other in a positive and hands-on learning environment.

### **Camp Staff**

The FELC summer day camps are staffed and led by professional adult outdoor educators. This is Sr. Shirley's seventh year to lead the camps. FELC campers will be with an adult staff leader at all times throughout all activities that happen during the camp. There are FELC volunteers who also assist the adult staff leaders to make sure that all campers receive the attention they need throughout the camp week.

### **Facilities**

The FELC is a space for indoor and outdoor learning experience. The center is a modern facility with bathrooms, drinking fountain, kitchen, and classroom space for inside activities. The environment around the center is a collection of natural learning environments. Within a short walking distance, campers can experience our children's garden, woodlands, butterfly gardens, wetlands, and Seeds of Hope Farm.



# Kids Catch

# Summer at FELC Summer Camps



## June - August 2017

194 St. Francis Ave.  
Tiffin, OH 44883  
419-448-7485  
felctiffin.org

**Thanks to the generosity of the 2016 Marathon Classic, FELC has been able to use the recent grant fund of \$24,700 for summer interns, camp supplies, new equipment and additional scholarships.**